

I am Deaf
Let's
talk 

25 Signs to Learn for
Bars and Restaurants

deaf.org.nz



Deaf
AOTEAROA
TANGATA TURI

HELLO I'm Erich

I'm from South Africa, but a proud Kiwi.

I'm a supervisor at Progressive Enterprises.

I love barbeques, rugby, travelling, camping and hanging out with my four-year old son, Micah.

It's cool to see more people in bars and restaurants using New Zealand Sign Language (NZSL). It's very useful for communicating across distances and in noisy environments!



Deaf Aotearoa

Deaf Aotearoa is the Disabled People's Organisation (DPO) representing the voice of Deaf New Zealanders, and the national service provider for Deaf people in New Zealand.

Deaf Aotearoa works closely with Deaf communities, government agencies and other organisations to increase awareness, promote NZSL and strengthen the rights of Deaf people. All Deaf Aotearoa profits go back to the Deaf community by way of improved services, sponsorship and donations.

Deaf Aotearoa's services include:

- **First Signs** – access to NZSL and language development for families of deaf children aged 0 – 5
- **Youth** – developing strong Deaf identities and leadership skills, and providing a youth internship programme
- **Employment** – support for transition, job seeking, retaining employment and upskilling
- **Hauora** – needs assessments, assistive equipment, and information and advice
- **iSign** – NZSL interpreting services to facilitate communication between Deaf and hearing people.
- **Deaf Awareness and NZSL courses** – courses for organisations to learn about Deaf culture and NZSL. Courses are tailored the organisation's interests and the ways they engage with Deaf people.

Deaf Aotearoa is also the New Zealand representative to the World Federation of the Deaf.



For more information visit deaf.org.nz

Garage Project

We're a small but growing brewery, located in an old petrol station in Wellington. It's an unlikely place for a brewery but our aim in the Garage is to create unique and beautiful beers.

We like pushing boundaries, reinterpreting styles and challenging the notions of what beer can be. We're here to try something new. Just like you.



Colab Hospitality Group

CHG is the mothership for a group of businesses committed to effecting social change through hospitality. We acknowledge the diversity of our customers and use this to start conversations about inclusion and acceptance.

The logo for The Colab Hospitality Group is enclosed in a black rectangular border. It features the words "THE COLAB HOSPITALITY GROUP" in a bold, black, sans-serif font, stacked vertically.

The collective belief of CHG is that all customers deserve the same exceptional levels of service regardless of their physical, social or neurological barriers. To respond to this need we have designed industry specific training programs to support more diversity in the workplace. This has led to partnering with Garage Project and other businesses to deliver New Zealand Sign Language training, Mental Health programs and workshops on creating inclusive spaces for all.

in 2018, Colab Hospitality Group founding company Coffee Educators released a 'How to Order Your Coffee in NZSL' booklet and we are excited to see the this new 'Bars and Restaurants' booklet come to fruition. Cheers!

NEW ZEALAND SIGN LANGUAGE WEEK

TE WIKI O TE REO TURI

Every May, Deaf Aotearoa organises New Zealand Sign Language Week – a celebration of one of the country's official languages.

NZSL Week is a chance for the Deaf community to stand proud as Deaf, and to celebrate their language and culture. It also works to break down barriers, fears and misconceptions. NZSL Week lets Deaf New Zealanders put their hands up and be seen!

Our vision for NZSL Week is to increase awareness and understanding of NZSL and the Deaf community, and to empower and strengthen the Deaf community.

For more information visit nzslweek.org.nz

LEADERS TRAINING | SIGN CLASSES | VIDEOS | RESOURCES | SIGNING | SIGNING | SIGNING | SIGNING | SIGNING | SIGNING

Sign Language Week
6-12 MAY 2016

MY LANGUAGE MY PLACE

give a little
DONATE NOW
www.givealittle.co.nz/signlanguageweek

NZSL Week is funded partly by grants and donations. We need your support!

FINANCED SUPPORTED BY
NZSL
New Zealand Sign Language
Trust

SIGN LANGUAGE IS FOR EVERYONE

HOW TO COMMUNICATE WITH A DEAF PERSON

A conversation with a Deaf person is the same as a conversation with a hearing person – Deaf people just use different communication tools.

Like hearing people, Deaf people are unique individuals with interesting qualities and skills. They have families, jobs and hobbies.

You can communicate with Deaf people in several ways, including New Zealand Sign Language, spoken/written English or a mix of these.

Appropriate use of gesture, body language and facial expressions can also be very effective, as Deaf people communicate visually.

Not all Deaf people can lip read well. It's estimated 70% of lip reading is guesswork, even if the speaker articulates clearly. That's why relying solely on lip reading as a way to communicate isn't recommended.

Face the Deaf person and get their attention before speaking. Eye contact is very important so try to maintain it and don't turn away while the Deaf person is signing.

Using a New Zealand Sign Language Interpreter is the best way to ensure full communication occurs. Booking an interpreter is easy and quick and will avoid communication breakdowns.

To book an interpreter, contact iSign:

www.isign.co.nz

0800 934 683 or Free TXT: 3359

bookings@isign.co.nz

A FEW TIPS FOR SIGN LANGUAGE

Facial expressions

Facial expressions are an important aspect of NZSL. In spoken languages, intonations are used to indicate what kind of sentence it is – a question or statement. NZSL shows intonation using facial expressions. Having a plain facial expression is like speaking with a monotonous voice. It's boring!

Hand position

Hand positioning is very important. It's helpful to see the signs in action – you can look up videos for these signs in the NZSL Dictionary online at nzsl.nz or download the app from Google Play and the Apple App store.

Which hand to use?

Use your dominant hand
– the hand you write with
– to execute all of the signs.
For some signs you'll need to use both hands.


I am Deaf
LET'S TALK

25 Signs to Learn with
Your Family
deaf.org.nz



I am Deaf
let's talk

25 Signs to Learn for
Medical Situations
deaf.org.nz




I am Deaf
LET'S TALK

25 Signs to Learn at
Work
deaf.org.nz




I am Deaf
let's Talk

25 Signs to Learn for
the Weekend
deaf.org.nz




I am Deaf
LET'S talk

25 Signs to Learn for
Māori Concepts
deaf.org.nz



I am Deaf
Let's talk

25 Signs to Learn for
First Signs Families
deaf.org.nz



25 SIGNS TO LEARN FOR BARS AND RESTAURANTS

This is one of a series of booklets designed to introduce you to NZSL. It gives you a practical opportunity to quickly learn some basic vocabulary relevant to your environment.

Learn these signs and use them as often as you can. Tell your friends about them and share the wonderful gift of NZSL. Then you'll understand why 20,000 New Zealanders use it every day!

ALSO AVAILABLE:

25 Signs to Learn with Your Family

25 Signs to Learn for Medical Situations

25 Signs to Learn at Work

25 Signs to Learn for the Weekend

25 Signs to Learn for Māori Concepts

25 Signs to Learn for First Signs Families



I want what?



INSTRUCTIONS

I: Point to your chest.

WANT: With palm flat against chest, move hand downwards and out.

WHAT?: With lowered eyebrows, move index finger from side to side.



Thank you





Drink / glass





Beer





Draught (tap) Beer





Pint of Beer





Bottle





Wine



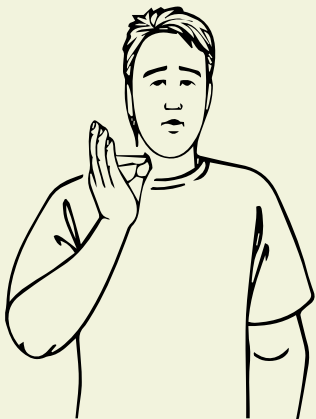


Red





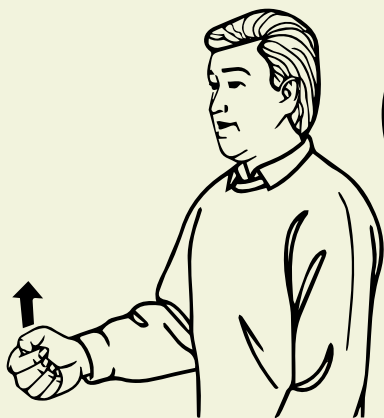
White





LINDAUER

Champagne



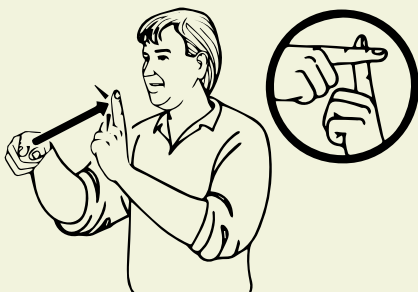


Cocktail





G & T





Whisky





Coke





Soft drink / Lemonade





437

Water





Juice





Food



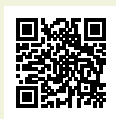


Chips



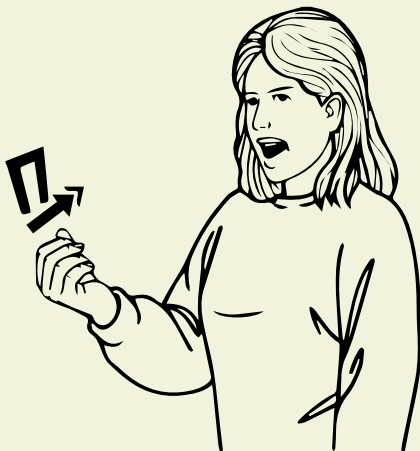


Hamburger





How much?





Eftpos





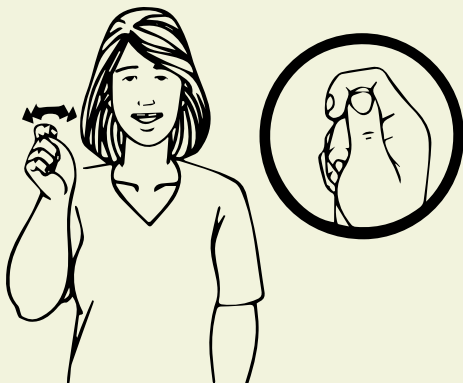
Credit Card



TAXI
CITY TAXIS LTD.
FOR HIRE



Taxi



THANKS!

This booklet is a collaboration between
Deaf Aotearoa, the Colab Hospitality Group
and Garage Project.

Particular thanks to Erich Krogmann.

Thanks to Bunny Turner for the photography.

Illustrations from the
NZSL Online Dictionary
www.nzsl.nz

Deaf Studies Research Unit
Victoria University of Wellington

New Zealand Government

PLEASE SUPPORT DEAF AOTEAROA

DONATE NOW

givealittle
from the  Spark Foundation

www.givealittle.co.nz/org/deafaotearoa

For more information visit deaf.org.nz





I am Deaf

Erich

**NEW ZEALAND
SIGN LANGUAGE WEEK**

TE WIKI O TE REO TURI
ANNUALLY DURING MAY