

I am Deaf

 LET'S
TALK

25 Signs to Learn at
Work

deaf.org.nz



Deaf
AOTEAROA
TANGATA TURI



HELLO,
I'm Rhian

I'm a qualified builder.
I love playing rugby, and have played for the Northern Marlins Deaf Rugby Union since 2003.
I want to show that Deaf people can be skilled and dedicated workers in all sorts of professions.



Deaf Aotearoa

Deaf Aotearoa is the national service provider for Deaf people in New Zealand.

We work with Deaf communities and provide information, resources and services including:

- Access to employment
- Educational programmes
- Service coordination and needs assessment
- Specialised equipment
- Youth development and transition programmes
- Community development
- New Zealand Sign Language interpreting
- NZSL teaching and support for families of deaf children aged 0-5 years.

Deaf Aotearoa works closely with government agencies, not-for-profit sector organisations, and the corporate sector to increase awareness of the Deaf community, promote New Zealand Sign Language and strengthen the rights of Deaf people.

As well as being a Disabled Person's Organisation, Deaf Aotearoa is also the New Zealand representative member of the World Federation of the Deaf, the international body for Deaf people.

Deaf Aotearoa also provides education and awareness courses to organisations that want to learn about Deaf culture and NZSL. These courses can be tailored to accommodate organisations' interests and time requirements.

Deaf Awareness courses

Get an insight into the Deaf world, explore NZSL, Deaf culture and the community through these interactive courses. They're ideal for breaking down communication barriers for businesses, groups and organisations.

NZSL Courses

Learn NZSL vocabulary and grammar specific to your workplace. Courses are individually designed to provide managers and staff with the words and phrases they use regularly. These can then be applied quickly in a practical setting when working with Deaf customers, clients or staff.



For more information visit deaf.org.nz

NEW ZEALAND SIGN LANGUAGE WEEK

TE WIKI O TE REO TURI

Every May, Deaf Aotearoa organises New Zealand Sign Language Week – a celebration of one of the country's official languages.

NZSL Week is a chance for the Deaf community to stand proud as Deaf, and to celebrate their language and culture. It also works to break down barriers, fears and misconceptions. NZSL Week lets Deaf New Zealanders put their hands up and be seen!

Our vision for NZSL Week is to increase awareness and understanding of NZSL and the Deaf community, and to empower and strengthen the Deaf community.

For more information visit nzslweek.org.nz



HOW TO COMMUNICATE WITH A DEAF PERSON

A conversation with a Deaf person is the same as a conversation with a hearing person – Deaf people just use different communication tools.

Like hearing people, Deaf people are unique individuals with interesting qualities and skills.

They have families, jobs and hobbies.

You can communicate with Deaf people in several ways, including New Zealand Sign Language, spoken English or a mixture of both.

Appropriate use of gesture, body language and facial expressions can also be very effective, as Deaf people communicate visually.

Not all Deaf people can lip read. It's estimated 70% of lip reading is guesswork, even if the speaker articulates clearly. That's why relying solely on lip reading as a way to communicate isn't recommended.

Face the Deaf person and get their attention before speaking. Eye contact is very important so try to maintain it and don't turn away while the Deaf person is signing.

Using a New Zealand Sign Language Interpreter is the best way to ensure full communication occurs.

Booking an interpreter is easy and quick and will avoid communication breakdowns.

To book an interpreter, contact iSign:

www.isign.co.nz

0800 934 683

bookings@isign.co.nz

A FEW TIPS FOR SIGN LANGUAGE

Facial expressions

Facial expressions are an important aspect of NZSL. In spoken languages, intonations are used to indicate what kind of sentence it is – a question or statement.

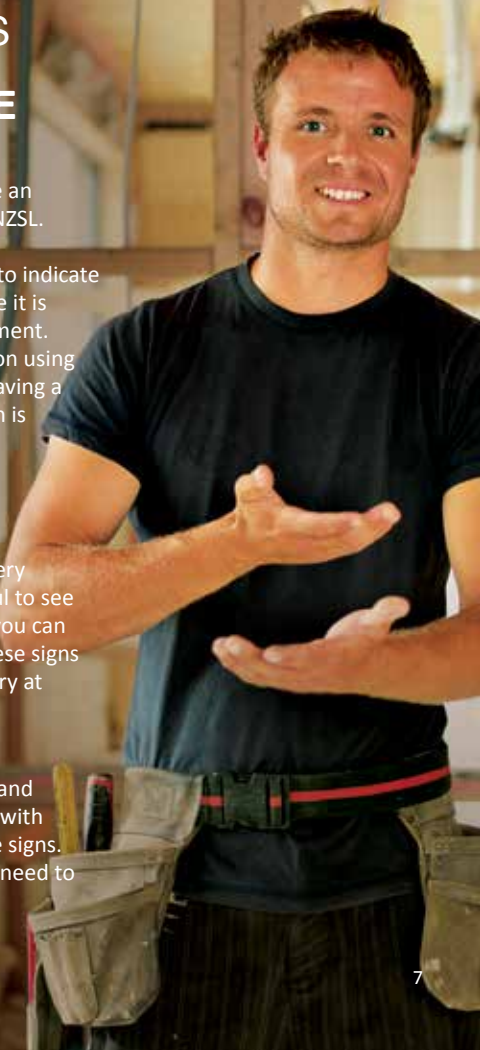
NZSL shows intonation using facial expressions. Having a plain facial expression is like speaking with a monotonous voice. It's boring!

Hand position

Hand positioning is very important. It's helpful to see the signs in action – you can look up videos for these signs in the online dictionary at nzsl.vuw.ac.nz.

Which hand to use?

Use your dominant hand – the hand you write with – to execute all of the signs. For some signs you'll need to use both hands.



I am Deaf

let's
talk

25 Signs to Learn for
Medical Situations
deaf.org.nz



I am Deaf

let's
Talk

25 Signs to Learn for
the Weekend
deaf.org.nz



I am Deaf

LET'S
TALK

25 Signs to Learn with
Your Family
deaf.org.nz



I am Deaf

LET'S
talk

25 Signs to Learn for
Māori Concepts
deaf.org.nz



25 SIGNS TO LEARN AT WORK

This is one of a series of booklets designed to introduce you to NZSL. It gives you a practical opportunity to quickly learn some basic vocabulary relevant to your environment.

Learn these signs and use them as often as you can. Tell your friends about them and share the wonderful gift of NZSL. Then you'll understand why 25,000 New Zealanders use it every day!

ALSO AVAILABLE:

25 Signs to Learn for Medical Situations

25 Signs to Learn for the Weekend

25 Signs to Learn for Māori Concepts

25 Signs to Learn with Your Family



are you all right?



INSTRUCTIONS

The right fist is held out palm forward/down, blade right, thumb extended, and is moved forward, down and round in small vertical clockwise circles, twice. Eyebrows are raised.



boss/manager



INSTRUCTIONS

Both fists are held out, palms towards the body, blades down, the forefingers and thumbs extended forming an L-shape.

The hands are moved up/back towards the shoulders, bending from the elbows, to palms facing the head, and blades forward.



break



INSTRUCTIONS

Both fists are held out a little way apart, palms down, and moved towards each other, then twisted towards each other from the wrists.



chat

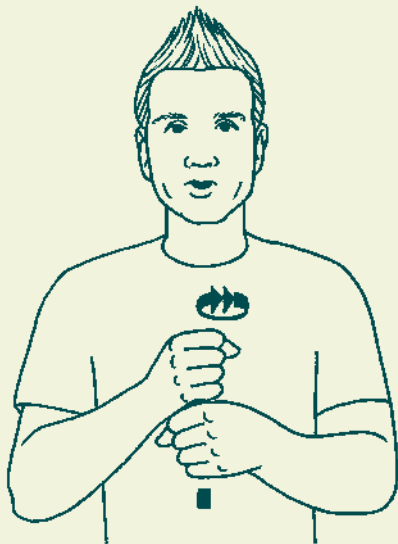


INSTRUCTIONS

Both flat hands are held up from bent elbows, the right hand nearer to the signer, the right palm facing left and the left palm facing right, with fingers apart and pointing up. Both hands move forward together, twisting rapidly and very slightly from the wrists.



coffee



INSTRUCTIONS

Both fists are held out, palms facing the signer, the blade of the right fist resting on the thumb edge of the left fist.

The right fist is rubbed in small anticlockwise circles on the left fist.



8-14 May 2017

NZSL Week Events

Partner with **piccofiddle**

Learn more about us at [piccofiddle.com](#)

NZSL Week is funded using the general
Māori, Whānau & Community Development
Fund.

Welcome to New Zealand Sign Language Unit!

NZSL Week is being held from Thursday 8th to Sunday 14th May 2017.

Taster Class Registration Now Open!

Click on the Taster Class link above for registration form!

**FREE NZSL
Taster Classes**



MacBook Pro

computer



INSTRUCTIONS

The left hand is held out, palm right, blade forward, fingers curved towards thumb in a C-shape. The flat right hand is held palm forward/down, blade right, fingers flexed with fingertips just inside the C-shape, tapping down on the left thumb.



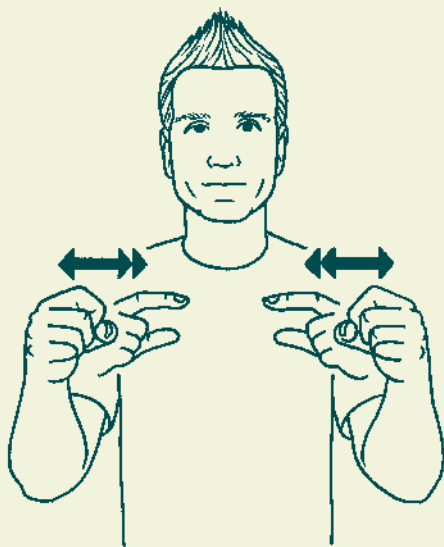
fingers wiggling as if playing a piano.



Hold/keep indicated hand in position.



email



INSTRUCTIONS

Both fists are held out, palms facing each other, blades out. Both forefingers are crooked, then flicked twice towards each other while the fists move back and forth at the wrists.



finish

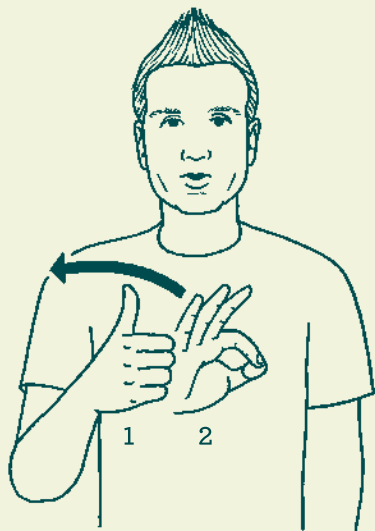


INSTRUCTIONS

Both fists are held up from bent elbows at shoulder height, palms facing each other, blades down, thumbs extended. The fists are twisted at the wrists towards each other, rapidly, several times.



good morning



INSTRUCTIONS

First the right fist is held up, thumb extended and pointing upwards. Then the right hand changes to palm left/down, blade forward, the thumb and forefinger meeting to form a D-shape, the other fingers apart and curved. The formation is moved up/right in an arc.



good on you



INSTRUCTIONS

Both fists are held at shoulder level, palms facing the signer/in, blades down, with the thumbs extended, and are moved forward/right to a halt, with a little bounce at the end of the movement.



google



INSTRUCTIONS

Both hands are raised at head level, palms facing each other, blades facing outwards. The thumbs and forefingers meet to form an O-shape, the other fingers apart. The hands move in a circular motion alternatively in front of the face, twice.



lunch



INSTRUCTIONS

The right hand is held up near the right jaw, palm left, blade forward, the fingers flexed and the thumb opposed. The right hand is moved left a little way.



mate

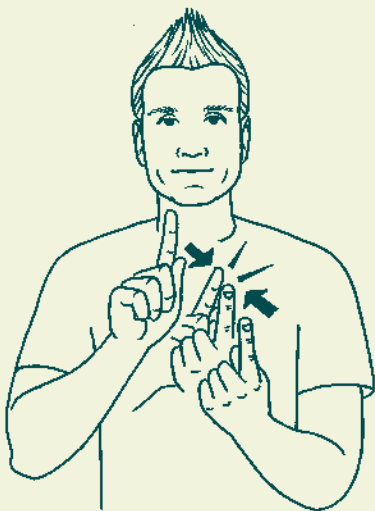


INSTRUCTIONS

Both fists are raised, pressed together between the first and second knuckles, the left fist blade down and the right blade forward. The fists move apart a little, twisting from the wrists, to meet again with the positions reversed, twice.



meet



INSTRUCTIONS

The left fist is held up, palm facing the signer/up, blade right, the forefinger extended. The right fist is held up in front of the face, palm forward/left, blade forward/right, the forefinger extended.

The two hands are moved towards each other, contacting at the knuckles.



meeting



INSTRUCTIONS

Both hands are held up, the right hand higher than the left, palms facing forward, with the extended forefingers pointing up and the other fingers curled. The hands are moved towards each other, down and round in vertical circles, alternately, twice.

FEBRUARY 2011

Saturday 19



~~WORK TIME~~

TU
W

FUR
VES
A TIME

AGES



TAA

FRA

REK
EXTRA

HR

	JAN	FEB	MAR	APR	MAY	JUN	JUL	AUG	SEP	OCT	NOV	DEC
1												
2												
3												
4												
5												
6												
7												
8												
9												
10												
11												
12												
13												
14												
15												
16												
17												
18												
19												
20												
21												
22												
23												
24												
25												
26												
27												
28												
29												
30												
31												



money



INSTRUCTIONS

The right hand is held up, palm up/back/in, blade down/forward/in, with the fingers bunched into the thumb. The thumb pad is rubbed across the pads of the fingers, several times.



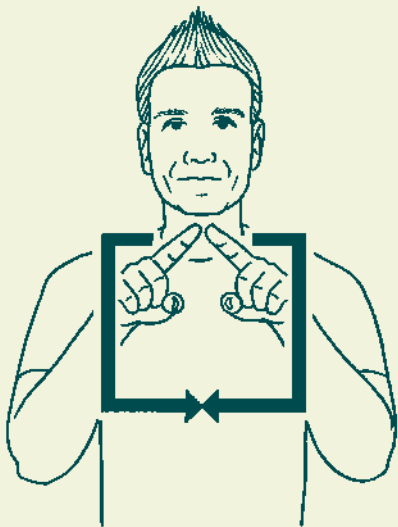
Thumb pad rubs across the pads of the fingers.



Copier / Printing Paper
Express
A4
150gsm
80% recycled
500 sheets

Copier / Printing Paper
Express
A4
150gsm
80% recycled
500 sheets

paper



INSTRUCTIONS

Both hands are held up, palms forward, blades out, with the forefingers extended, meeting at the tips.

The fists are moved horizontally apart towards the sides, then down, then horizontally towards each other.



please

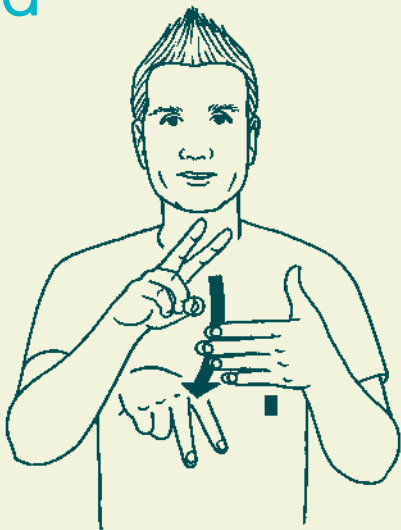


INSTRUCTIONS

The flat right hand is held up, palm facing the signer, blade left, with the fingertips touching the chin. The hand is moved slowly forward/down to palm up/facing the signer, with the fingers curling up into a fist and the thumb sticking out.



read



INSTRUCTIONS

The flat left hand is held out, palm up/back/right, blade down/back/right, fingers spread. The right fist is held above the left hand, palm down, blade forward/right, with the first two fingers extended and apart, and is moved down.

- Hold/keep indicated hand in position.



sorry



INSTRUCTIONS

The right hand is held up at the right side of the head, palm forward/left, blade back/left, fingers apart and slightly curved. Moving from the elbow, the hand is moved side to side in front of the right temple.



tea



INSTRUCTIONS

The right hand is raised, palm facing the signer, blade down, the thumb and forefinger meeting to form an O-shape, the other fingers apart. The left hand is held at chest level, palm up and blade back. The right hand twists up from the wrist to palm left, blade forward.

- Hold/keep indicated hand in position.



text (mobile phone)



INSTRUCTIONS

The right fist is held out from the bent elbow, palm left, blade down/back, with the forefinger hooked and the thumb extended. The hand is moved forward/down, the thumb flexing down against the forefinger, rising a little and pressing down again, making small circular movements.



thank you



INSTRUCTIONS

The right hand is raised so that the fingertips touch the chin, palm facing the signer, blade left, fingers curved, and is moved forward/down.



Port-O-Let

toilet



INSTRUCTIONS

The right fist is raised to the right ear, palm forward/left, blade forward/right. The side of the forefinger and tip of the thumb take hold of the ear lobe, and tug it a little, several times.



work



INSTRUCTIONS

Both flat hands are held out palms in/facing the signer, blades down, the right above the left. The hands move towards each other, the right blade striking the left forefinger side twice.

- Hold/keep indicated hand in position.

THANKS!

Deaf Aotearoa would like to thank
all those that play a part in promoting
New Zealand Sign Language Week each year.
Particular thanks to Rhian.

New Zealand Government

PLEASE SUPPORT DEAF AOTEAROA

DONATE NOW

givealittle
from the  Spark Foundation

www.givealittle.co.nz/org/deafaotearoa

For more information visit deaf.org.nz

The instructions for the NZ Sign Language illustrations
were adapted from the Online Dictionary of NZSL,
Deaf Studies Research Unit, Victoria University of Wellington



I am DEAF

Rhian BUILDER

NEW ZEALAND
SIGN LANGUAGE WEEK
TE WIKI O TE REO TURI
ANNUALLY DURING MAY

